



## REF. 791

### 3 PIECES STAINLESS STEEL BALL VALVE BW INITIAL RANGE

3 pieces stainless steel ball valve with full bore for Chemical industries, petrochemical industries, hydraulic installation, heating, water distribution and compressed air.  
PTFE packing and gasket, PTFE filled with 15% glass seat.  
Removable central part for an easy maintenance.



**Size :** DN8 to DN100  
**Connection :** BW  
**Min Temperature :** -20°C  
**Max Temperature :** +180°C  
**Max Pressure :** 63 bars (up to DN20)  
**Specifications :** 3 pieces type  
PTFE filled with 15% glass seat  
Anti blow-out stem  
Full bore

**Materials :** Stainless Steel ASTM A351 CF8M

# REF. 791

## 3 PIECES STAINLESS STEEL BALL VALVE BW INITIAL RANGE

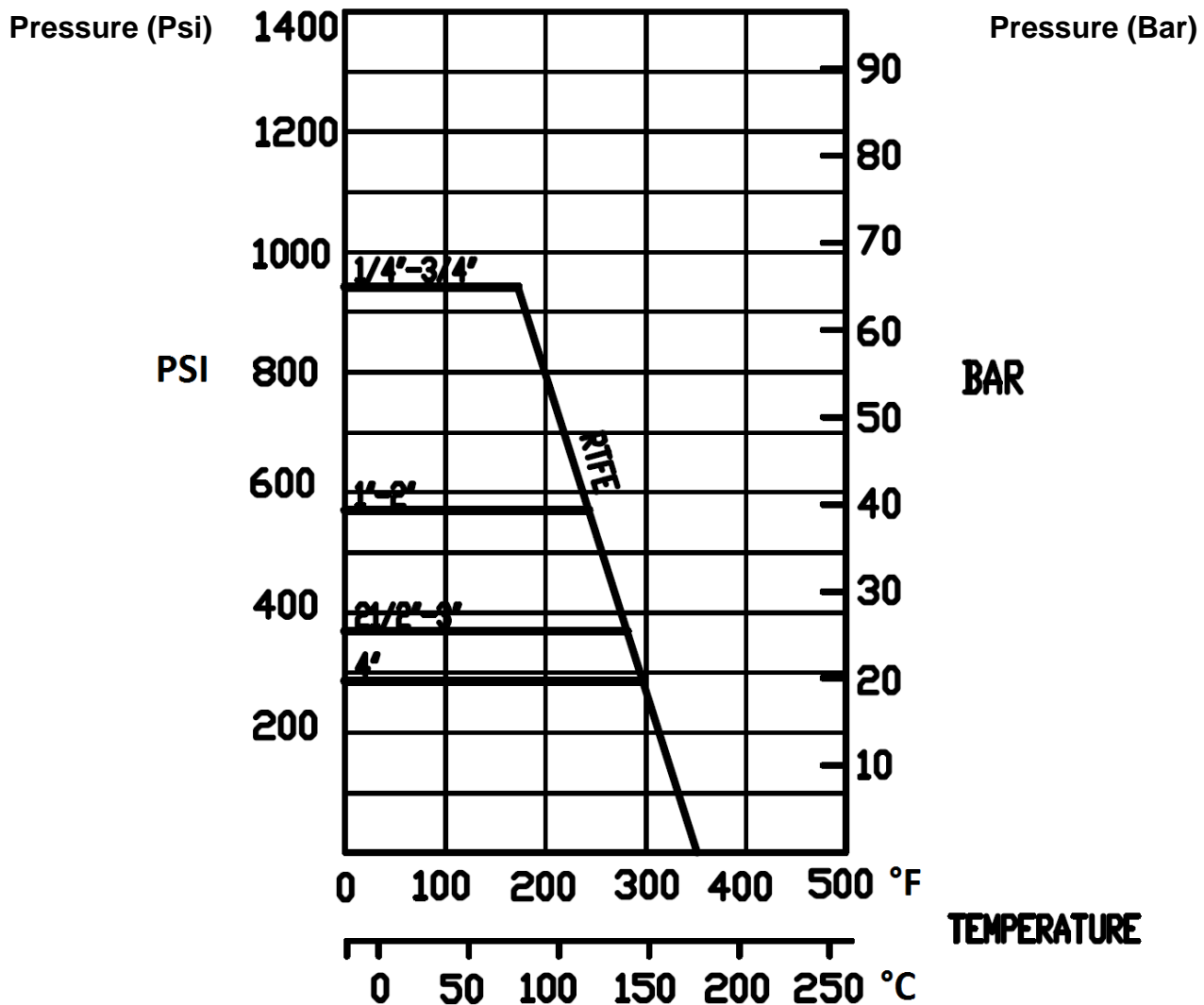
**SPECIFICATIONS :**

- Full bore
- Anti blow-out stem
- PTFE packing
- Locking device
- Stem extension in AISI 304 ( option )

**USE :**

- Chemical and pharmaceutical industries, petrochemical industries, hydraulic installation, compressed air
- Min and max Temperature Ts : -20°C to + 180°C
- Max Pressure Ps : 63 bars up to DN20, 40 bars from DN25 to 50, 25 bars from DN65 to 80 and 20 bars for DN100 (see graph under)
- Compressed air : 10 bars max
- Do not use with steam

**PRESSURE / TEMPERATURE GRAPH ( STEAM AND COMPRESSED AIR EXCLUDED ) :**



## REF. 791

### 3 PIECES STAINLESS STEEL BALL VALVE BW INITIAL RANGE

**TORQUE VALUES ( In Nm without safety coefficient ) :**

DN	8	10	15	20	25	32	40	50	65	80	100
Torque (Nm)	2	2	2.5	3.5	6	7	12	16	40	50	70

**BOLT TIGHTENING TABLE ( in Nm ) :**

DN	8	10	15	20	25	32	40	50	65	80	100
Torque (Nm)	4	4	8	8	10	13	20	20	35	45	65

**FLOW COEFFICIENT Kvs ( M3 / h ) :**

DN	8	10	15	20	25	32	40	50	65	80	100
Kvs ( m3/h )	5.2	5.2	20.7	30.2	40.6	70	90.8	208.4	275.9	501.6	865

**RANGE :**



- Stainless steel 3 pieces ball valve Initial Range BW **Ref. 791** from DN8 to DN100



- AISI 304 stem extension **Ref.9810611-9810614** from DN8 to DN50



- Blue handle cover **Ref. 9830584-9830588** from DN15 to DN100

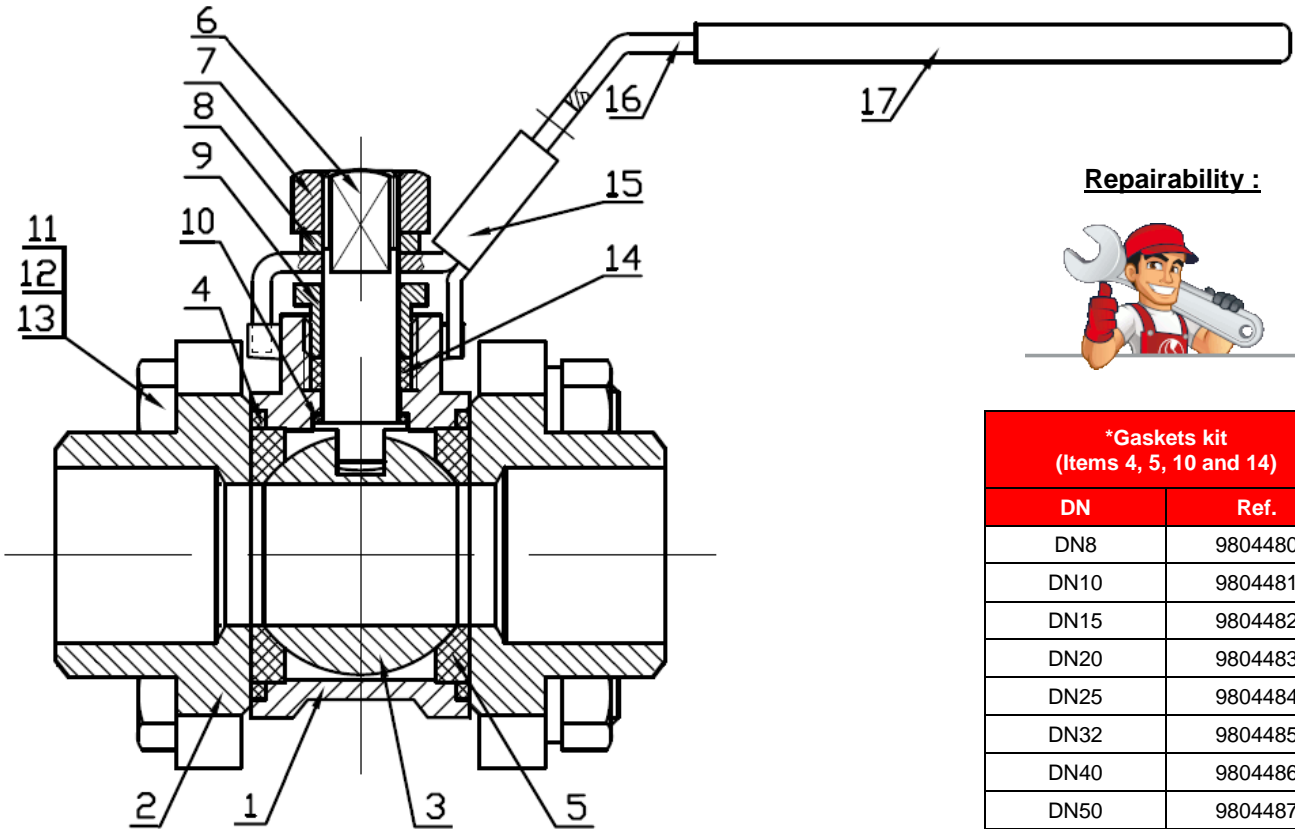
**CONNECTION :**

- BW

# REF. 791

## 3 PIECES STAINLESS STEEL BALL VALVE BW INITIAL RANGE

**MATERIALS :**



**Repairability :**



*Gaskets kit (Items 4, 5, 10 and 14)	
DN	Ref.
DN8	9804480
DN10	9804481
DN15	9804482
DN20	9804483
DN25	9804484
DN32	9804485
DN40	9804486
DN50	9804487
DN65	9804488
DN80	9804489
DN100	9804490

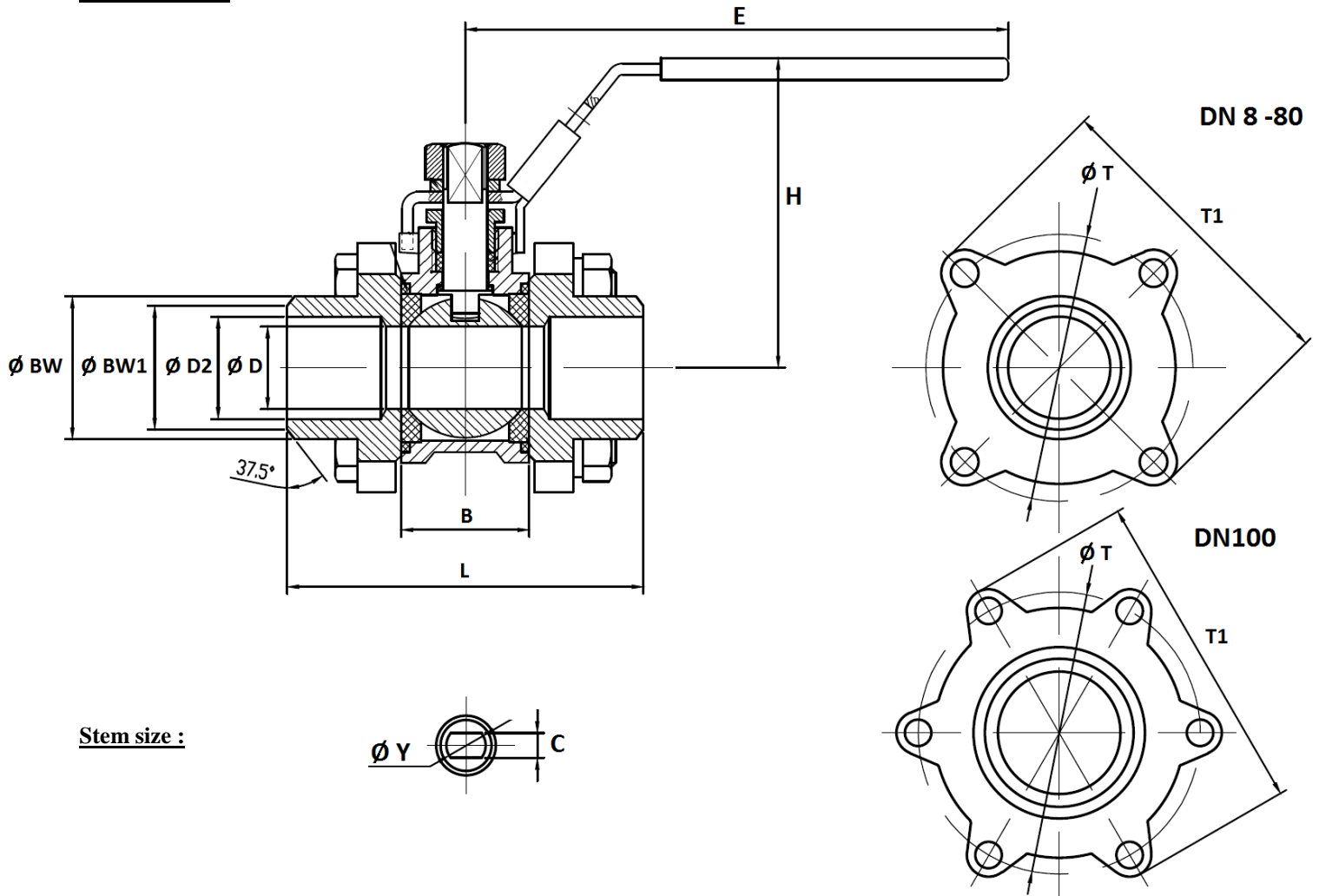
Item	Designation	Materials
1	Body	ASTM A351 CF8M
2	Ends	
3	Ball	AISI 316
4*	Body gasket	PTFE
5*	Seat	PTFE filled with 15% glass fiber
6	Stem	AISI 316
7	Packing nut	AISI 304
8	Handle washer	
9	Packing gland	
10*	Thrust washer	PTFE
11	Stud	AISI 304
12	Stud washer	
13	Stud nut	
14*	Packing	PTFE
15	Locking device	AISI 304
16	Handle	
17	Handle cover	PVC

(\* : Included in gaskets kit)

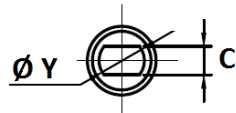
# REF. 791

## 3 PIECES STAINLESS STEEL BALL VALVE BW INITIAL RANGE

Size (in mm) :



Stem size :

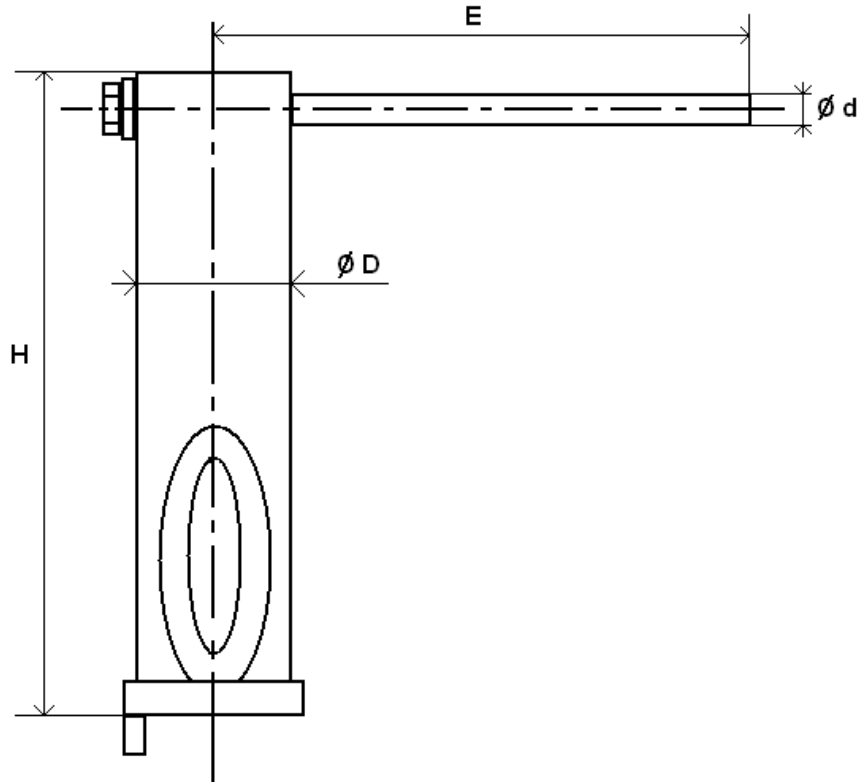


DN	8	10	15	20	25	32	40	50	65	80	100
Ø D	11.6	12.5	15	20	25	32	38	50	64	76	100
L	59	59	63.3	70.6	82	97	109	124.6	162	175	216
B	21.1	21.1	23.3	28.6	34	44	51	63	84.3	94.7	119.2
E	103	103	126	126	162	162	193	193	230	230	320
H	49	49	57	62	72	78	91	102	122	132	177
Ø Y	M8	M8	M8	M8	M10	M10	M12	M12	M14	M14	M20
C	5	5	5	5	6.5	6.5	8.5	8.5	9.8	9.8	16
Ø T	38.5	38.5	43	51.5	58	70	81.5	101	136	157	195.5
T1	51	51	57.5	66	74.5	86.5	100.5	121.5	161	185	226.5
Ø BW	15.5	17.5	22	27.3	34	42.7	48.7	61	76.5	90	115
Ø BW1	13.3	14.5	17	22.5	28.6	36	43	54	68	84	104
Ø D2	11.6	12.5	15	20	25	32	39.8	50	64	76	100
Weight (Kg)	0.30	0.30	0.47	0.6	0.93	1.44	2.1	3.32	7.2	10.78	21.14
Ref.	791008	791010	791015	791020	791025	791032	791040	791050	791065	791080	791100

# REF. 791

## 3 PIECES STAINLESS STEEL BALL VALVE BW INITIAL RANGE

**STEM EXTENSION ( in mm ) :**



DN	8	10	15	20	25	32	40	50
H	126	126.3	126.3	126.3	126.3	126.3	128	128
E	124	124	124	124	157.8	157.8	188.5	188.5
Ø D	28	28	28	28	32	32	36.5	36.5
Ø d	12	12	12	12	14	14	14	14
Weight (in Kg)	0.33	0.33	0.34	0.34	0.48	0.48	0.62	0.62
Ref.	9810611	9810611	9810612	9810612	9810613	9810613	9810614	9810614

## REF. 791

### 3 PIECES STAINLESS STEEL BALL VALVE BW INITIAL RANGE

**STANDARDS :**

- Manufacturer certified ISO 9001 : 2015
- DIRECTIVE 2014/68/EU : For liquids and gas of Group 1
  - DN8-25 : Article 4, §3 (SEP), no CE marking
  - DN32-100 : Risk Category II, CE0038 or CE0343 marking
- Designing according to EN 12516-2
- Certificate 3.1 on request
- Pressure tests according to API 598, table 6
- BW ends according to EN 12627 (ex DIN 3239)

**ADVICE :** Our opinion and our advice are not guaranteed and shall not be liable for the consequences of damages. The customer must check the right choice of the products with the real service conditions.