

# Sight Glass Fittings Obround

to be **welded** directly to tank

# NORIS

## Bauform 225

### Application:

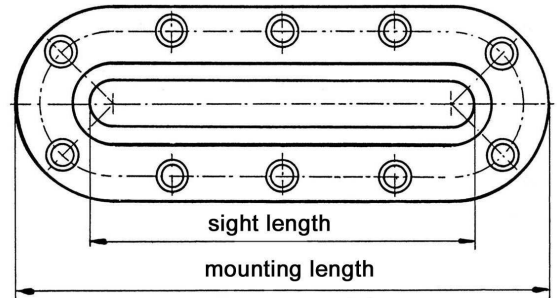
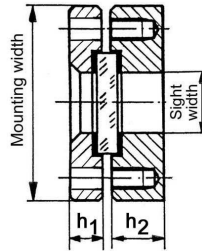
To show surface of a liquid, for insertion into attachment to tanks, vessels and silos.

### Operating conditions:

Temperature : 100°C or 280°C  
Pressure: 3 / 6 / 25 bar

### Materials:

|         |                                                                         |                 |
|---------|-------------------------------------------------------------------------|-----------------|
| Body    | WN 1.4571                                                               | RSt 37-2 / H II |
| Cover   | WN 1.4571                                                               | RSt 37-2 / H II |
| Screws  | A4-70                                                                   | 8.8 vz          |
| Glass   | Borosilicate glass acc. to DIN 7081<br>Soda lime glass acc. to DIN 8903 |                 |
| Gaskets | Asbestos free ( or other materials )                                    |                 |



### Mounting instruction:

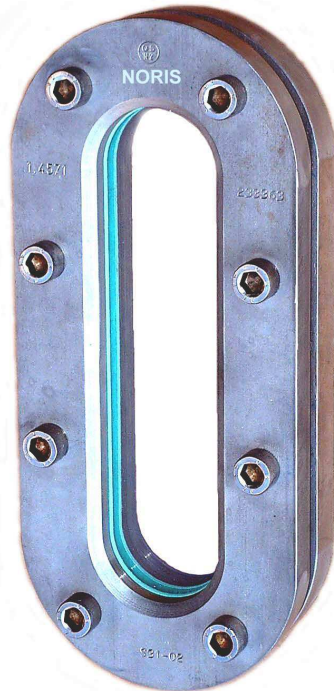
After welding please examine if sealing area is plane. Otherwise re-machining is necessary.

### Caution:

Before putting the fitting into operation, the strength of the cutout reinforcement in combination with the vessel wall should be checked in accordance with TÜV leaflet B9 ( AD Merkblatt B 9 )

### Example for an order:

Sight glass fittings, obround Bauform 225  
Body WN 1.4571  
Cover RSt 37-2  
Borosilicate glass – 3 bar  
410 x 120 mm



### Pressure 3 bar, Visual 50 mm

| Mounting dim.<br>Length x Width | Sight dim.<br>Length x Width | Strength |    |
|---------------------------------|------------------------------|----------|----|
|                                 |                              | h1       | h2 |
| 270 x 120                       | 200 x 50                     | 15       | 25 |
| 340 x 120                       | 270 x 50                     | 15       | 25 |
| 410 x 120                       | 340 x 50                     | 15       | 25 |
| 480 x 120                       | 410 x 50                     | 15       | 25 |
| 550 x 120                       | 480 x 50                     | 15       | 25 |
| 620 x 120                       | 550 x 50                     | 15       | 25 |
| 690 x 120                       | 620 x 50                     | 15       | 25 |
| 760 x 120                       | 690 x 50                     | 15       | 25 |

### Pressure 6 bar, Visual 30 mm

| Mounting dim.<br>Length x Width | Sight dim.<br>Length x Width | Strength |    |
|---------------------------------|------------------------------|----------|----|
|                                 |                              | h1       | h2 |
| 250 x 100                       | 180 x 30                     | 15       | 25 |
| 310 x 100                       | 240 x 30                     | 15       | 25 |
| 370 x 100                       | 300 x 30                     | 15       | 25 |
| 430 x 100                       | 360 x 30                     | 15       | 25 |
| 490 x 100                       | 420 x 30                     | 15       | 25 |
| 550 x 100                       | 480 x 30                     | 15       | 25 |
| 610 x 100                       | 540 x 30                     | 15       | 25 |
| 670 x 100                       | 600 x 30                     | 15       | 25 |

### Pressure 25 bar, Visual 20 mm

| Mounting dim.<br>Length x Width | Sight dim.<br>Length x Width | Strength |    |
|---------------------------------|------------------------------|----------|----|
|                                 |                              | h1       | h2 |
| 176 x 70                        | 126 x 20                     | 20       | 25 |
| 226 x 70                        | 176 x 20                     | 20       | 25 |
| 256 x 70                        | 206 x 20                     | 20       | 25 |
| 316 x 70                        | 266 x 20                     | 20       | 25 |
| 376 x 70                        | 326 x 20                     | 20       | 25 |
| 436 x 70                        | 386 x 20                     | 20       | 25 |
| 496 x 70                        | 446 x 20                     | 20       | 25 |
| 536 x 70                        | 486 x 20                     | 20       | 25 |

Modification reserved