

## Sight glass luminaire USL05-LED-Ex



### Applications:

- The illumination of the interior of boilers, tanks, silos, agitators and other closed containers and reactors as well as flow-through sight glasses in areas at risk of explosion; gas: zone 1 and 2, dust: zone 21 and 22.
- Also suitable for food processing plants

### Operating conditions:

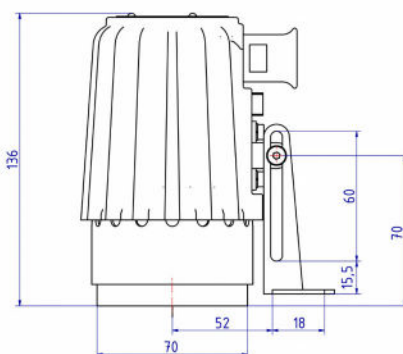
- independent of vessel internal pressure/ vacuum. Under no circumstances may a sight glass light replace the mating flange or the complete sight glass flange socket or be used directly to cover a vessel opening.

### Work temperature

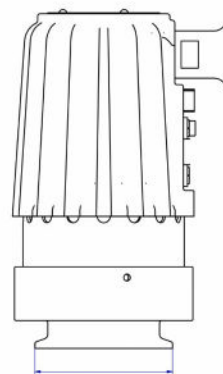
- Lumistar luminaires of this type are approved for use in ambient temperatures of up to 60°C, depending on the LED equipment used.

### Protection class

- IP 65 und IP 67 nach DIN EN 60529



USL05 with hinged bracket



USL05 fitted on a Metacamp\*

### Parts, design and materials:

#### Luminaire body:

- corrosion-resistant cast aluminium alloy, GK-ALSi10Mg Cable entry socket: with pressure-tight cast connection cable, 2 m, 5m or 10m Sinothrm 110 H05GG-F 3G 1.5 mm2
- Protective conductor terminal: lamp interior already connected; additional protective conductor terminal on the outside of the housing
- Mounting parts: see under accessories
- Weight: 0.9 kg

### Advantages

- Small design, high light output:  
Glare-free illumination; suitable for round sightglass fittings to DIN28120/DIN 28121 or similar as well as for screwed sightglass fittings to DIN 11851 and flow-through sightglass fittings.
- High light emission via optimally designed reflector

### Certification

- EU Type-Examination Certificate BVS 08 ATEX E 133
- II 2G Ex db IIC T6 Gb
- II 2D Ex tb IIIC T80°C Db

### Operating voltage

24 V AC/DC – 7.5 W  
 110-230 V AC – 7.5 W  
 Colour temperature: 6500 K  
 Luminous flux: 360-430 lm (depending on beam angle)  
 Beam angle: 12°, 25°, 38°

\*See data sheet Metaglas type 80.USL05

| USL05-LED-Ex       | Ambient temp |       | -20°C ≤ Ta ≤ +50°C |       | -20°C ≤ Ta ≤ +60°C |  |
|--------------------|--------------|-------|--------------------|-------|--------------------|--|
| 230 V AC-4 W       |              |       |                    | 2G T6 | 2D T180°C          |  |
| 24 V AC/DC - 7,5W  |              | 2G T6 | 2D T180°C          |       |                    |  |
| 110-230V AC - 7,5W |              | 2G T4 | 2D T180°C          |       |                    |  |