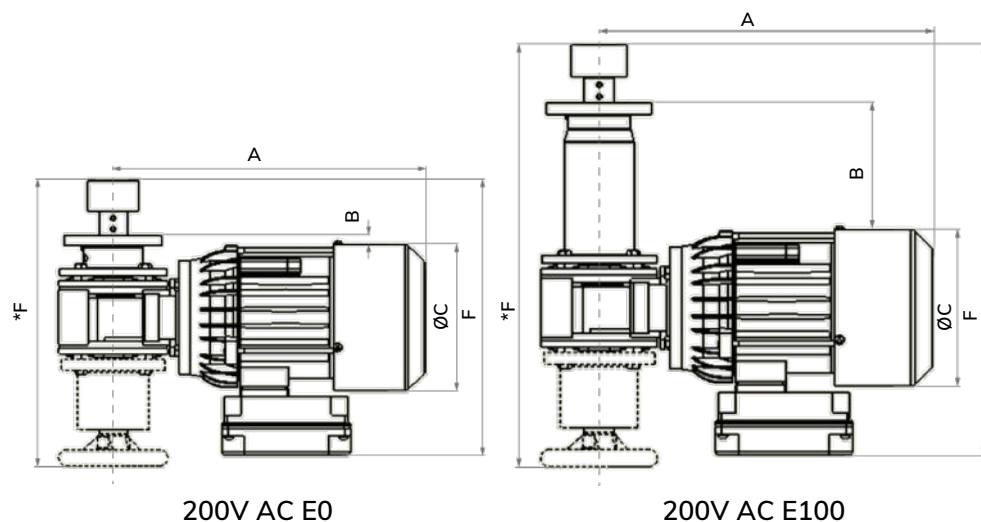


Zero-g

Drive Unit 200V AC

Zero-g mixers are the base line of Metenova's mixer program. They are very versatile and covers a vast range of applications all through the process chain.

General
Mixing
Applications




Measurements

| Mixer Model | Article Number | A mm (in) | B mm (in) | ØC mm (in) | F mm (in) | Weight kg (lb) | With Lowering Device | | |
|-------------|----------------|----------------|--------------|---------------|--------------|-------------------|----------------------|--------------------|---------------|
| | | | | | | | *F mm (in) | *Weight kg (lb) | |
| ZG1, ZG2 | E0 | ZG51502-E00875 | 231 (9.07) | 3 (0.1) | 110 (4.33) | 219 (8.62) | 5.2 (11.55) | 269 (10.59) | 6.6 (14.48) |
| | E100 | ZG51502-E00980 | 231 (9.07) | 103 (4.1) | 110 (4.33) | 319 (12.56) | 5.8 (12.85) | 350 (13.78) | 7.4 (16.38) |
| ZG3 | E0 | ZG12502-E00441 | 244 (9.61) | 5 (0.2) | 120 (4.72) | 227 (8.94) | 6.2 (13.76) | 252 (9.92) | 7.6 (16.80) |
| | E100 | ZG12502-E00427 | 244 (9.61) | 105 (4.1) | 120 (4.72) | 327 (12.85) | 6.9 (15.30) | 352 (13.88) | 8.4 (18.41) |
| ZG5 | E0 | ZG52502-E00442 | 286 (11.26) | 5 (0.2) | 134 (5.28) | 251 (9.88) | 9.9 (21.91) | 261 (10.28) | 11.1 (24.36) |
| | E100 | ZG52502-E00428 | 286 (11.26) | 105 (4.1) | 134 (5.28) | 351 (13.82) | 11.5 (25.26) | 361 (14.23) | 12.6 (27.87) |
| ZG6 | E0 | ZG13502-E00443 | 304 (11.97) | 3 (0.1) | 134 (5.28) | 249 (9.80) | 11.5 (25.38) | 260 (10.24) | 12.6 (27.80) |
| | E100 | ZG13502-E00429 | 304 (11.97) | 103 (4.1) | 134 (5.28) | 349 (13.76) | 13.2 (29.10) | 360 (14.17) | 14.4 (31.68) |
| ZG7 | E0 | ZG23502-E00444 | 320 (12.61) | 21 (0.8) | 150 (5.91) | 282 (11.10) | 15.3 (33.82) | 314 (12.36) | 17.8 (39.24) |
| | E100 | ZG23502-E00430 | 320 (12.61) | 121 (4.8) | 150 (5.91) | 382 (15.06) | 16.9 (37.21) | 414 (16.30) | 19.4 (42.86) |
| ZG8 | E0 | ZG53502-E00445 | 374 (14.72) | 26 (1.0) | 194 (7.64) | 319 (12.56) | 29.1 (64.22) | 344 (13.54) | 31.7 (69.86) |
| | E100 | ZG53502-E00431 | 374 (14.72) | 126 (5.0) | 194 (7.64) | 419 (16.50) | 31.9 (70.31) | 444 (17.50) | 34.4 (75.88) |
| ZG9 | E0 | ZG14502-E00446 | 399 (15.71) | 26 (1.0) | 194 (7.64) | 329 (12.95) | 35.5 (78.24) | 354 (13.94) | 38.0 (83.78) |
| | E100 | ZG14502-E00432 | 399 (15.71) | 126 (5.0) | 194 (7.64) | 429 (16.89) | 38.3 (84.33) | 454 (17.89) | 40.8 (89.90) |
| ZG10 | E0 | ZG24502-E00447 | 474 (18.64) | 16 (0.6) | 210 (8.27) | 338 (13.31) | 50.7 (111.71) | 353 (13.90) | 52.3 (115.19) |
| | E100 | ZG24502-E00433 | 474 (18.64) | 116 (4.6) | 210 (8.27) | 438 (17.24) | 54.2 (119.45) | 453 (17.83) | 55.8 (122.95) |

*F = F measurement with lowering device (Add-on option 3, see separate article number on page 3)

*Weight = Weight with lowering device

General Information

| | |
|------------------------------|--|
| Voltage | $\Delta 200 @ 50\text{Hz} / \Delta 200 @ 60\text{Hz} (\pm 5\%)$ |
| Efficiency Performance Class | IE3 |
| Thermal Protection | PTC thermistors |
| Certified for Incorporation |  |
| Protection Class | IP 55 |
| Environment Temperature | 0°C - 40°C (32°F - 104°F) |
| Paint | In compliance with FDA |
| Gear box oil | Food grade in compliance with FDA |
| Cooling Type | TEFC (Totally Enclosed, Fan-Cooled) |
| Motor support | Due to heavy weight, extra support is necessary for sizes ZG8 and above. |
| Packing and Marking | Items are individually packed and for traceability purposes marked with item & id no. |
| Quality Assurance | Metenova Quality Assurance system ensures the quality and traceability at all stages of the process. |

Product specific information

| Mixer model | Motor | Poles | Gear Box | Current | Min-Max rpm for Mixer |
|-------------|--|--------|----------|---------------------------------------|-----------------------|
| ZG1, ZG2 | 0.12 kW/ 0.17 hp @ 50 Hz 0.12 kW/ 0.17 hp @ 60 Hz | 2-pole | 7:1 | 0.75A @ 200V/50Hz – 0.75A @ 200V/60Hz | 50* - 490 |
| ZG3 | 0.25 kW/ 0.33 hp @ 50 Hz 0.25 kW/ 0.33 hp @ 60 Hz | 2-pole | 7:1 | 1.3A @ 200V/50Hz – 1.3A @ 200V/60Hz | 50* - 490 |
| ZG5 | 0.37 kW/ 0.50 hp @ 50 Hz 0.37 kW/ 0.50 hp @ 60 Hz | 2-pole | 7:1 | 1.9A @ 200V/50Hz – 1.9A @ 200V/60Hz | 50* - 490 |
| ZG6 | 0.55 kW/ 0.75 hp @ 50 Hz 0.55 kW/ 0.75 hp @ 60 Hz | 2-pole | 7:1 | 2.5A @ 200V/50Hz – 2.5A @ 200V/60Hz | 50* - 490 |
| ZG7 | 0.75 kW/ 1.0 hp @ 50 Hz 0.87 kW/ 1.17 hp @ 60 Hz | 2-pole | 7:1 | 3.6A @ 200V/50Hz – 3.6A @ 200V/60Hz | 50* - 490 |
| ZG8 | 2.2 kW/ 3.0 hp @ 50 Hz 2.2 kW/ 3.0 hp @ 60 Hz | 2-pole | 10:1 | 8.6A @ 200V/50Hz – 8.2A @ 200V/60Hz | 34* - 343 |
| ZG9 | 1.5 kW/ 2.0 hp @ 50 Hz 1.5 kW/ 2.0 hp @ 60 Hz | 4-pole | 7:1 | 6.5A @ 200V/50Hz – 6.1A @ 200V/60Hz | 24* - 245 |
| ZG10 | 3.0 kW/ 4.0 hp @ 50 Hz 3.0 kW/ 4.0 hp @ 60 Hz | 4-pole | 7:1 | 12.5A @ 200V/50Hz – 11.7A @ 200V/60Hz | 24* - 245 |

* When forced cooling is used, the minimum speed is 0 Hz

Options

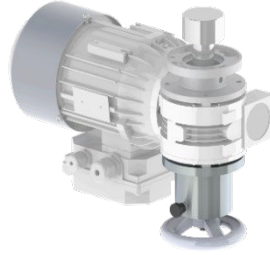
Option 1



Option 2



Option 3



Option 4



RPM Sensor,
Mix Head

RPM Sensor, Shaft

Lowering Device

Transport
Locking Device

| Mixer Model | RPM Sensor, Mix Head | | RPM Sensor, Shaft | | Lowering Device | | Transport Locking Device |
|-------------|----------------------|---------------|-------------------|---------------|-----------------|---------------|--------------------------|
| | E0 & E100 | E0 | E100 | E0* | E100 | E0 & E100 | |
| ZG1, ZG2 | - | ZG00014-03193 | ZG00014-03193 | ZG51502-04147 | ZG51502-04148 | ZG00016-01773 | |
| ZG3 | ZG00014-03083 | ZG00014-03193 | ZG00014-03193 | ZG12502-03638 | ZG12502-03639 | ZG12016-01775 | |
| ZG5 | ZG00014-03083 | ZG00014-03193 | ZG00014-03193 | ZG52502-02000 | ZG52502-02001 | ZG52016-01776 | |
| ZG6 | ZG00014-03083 | ZG00014-03193 | ZG00014-03193 | ZG13502-02002 | ZG13502-02003 | ZG13016-01777 | |
| ZG7 | ZG00014-03083 | ZG00014-03193 | ZG00014-03193 | ZG23502-02006 | ZG23502-02007 | ZG23016-02721 | |
| ZG8 | ZG00014-03083 | - | ZG00014-03193 | ZG53502-02008 | ZG53502-02009 | - | |
| ZG9 | ZG00014-03083 | - | ZG00014-03193 | ZG14502-02010 | ZG14502-02011 | - | |
| ZG10 | ZG00014-03083 | - | ZG00014-03193 | ZG24502-02012 | ZG24502-02013 | - | |

*Not possible to combine with RPM Sensor, Shaft

RPM Sensor

| Article Number | ZG00014-03083 | ZG00014-03193 |
|--------------------|------------------------------|------------------------------|
| Type | RPM Sensor, Mix Head | RPM Sensor, Shaft |
| Pulses/Turn | 1 | 4 |
| Output Function | 3-wire, NO contact PNP | 4-wire, NO/NC contact PNP |
| Indicator | Yellow LED | Yellow LED |
| Temperatur Range | -25°C - 70°C (-13°F - 158°F) | -25°C - 70°C (-13°F - 158°F) |
| Operations Voltage | 10...65 VDC | 10...30 VDC |
| Protection Class | IP67 | IP67 |

mete  nova

A REPLIGEN COMPANY

Metenova AB
Norra Ågatan 32, SE-43135
Mölnådal, Sweden
Phone +46(0)31 3359500
www.metenova.com
info@metenova.com

Metenova America INC
P.O Box 398
Glen Gardner, NJ 08826
USA
Phone +1(908)537 4199
info@metenova.com

The information in this publication is subject to change without prior notice. The information in this document is believed to be complete and accurate at the time of publication. Metenova assumes no responsibility for any errors that may appear in this document. Customer is responsible for determining Metenova's product will perform suitable in the intended application