

Powder and Vigorous Mixing Applications



# High Power

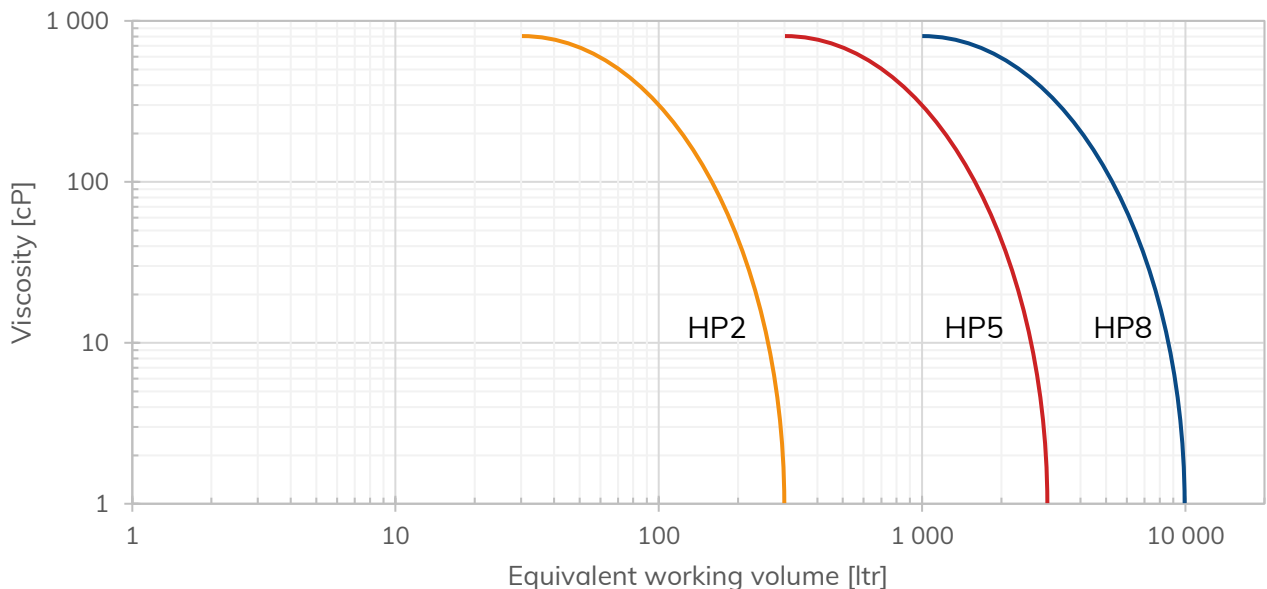
## Magnetic Mixer

The High Power mixer has a robust and aseptic design that creates medium to high shear forces. The mixer performs well in most applications and is designed for the upstream stages in the pharmaceutical and biotech industry.

The High Power mixer is a solid and liquid mixer which primary objective is to create and maintain a dispersion of solids in a liquid phase that is appropriate for the desired process result.

### Basic Selection

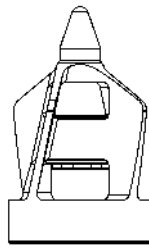
	HP2	HP5	HP8
Max Volume at 1 cP [ltr]	300	3000	10000
Max Speed [rpm]	1700	1700	1700



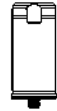
The information in this publication is subject to change without prior notice. The information in this document is believed to be complete and accurate at the time of publication. Metenova assumes no responsibility for any errors that may appear in this document. Customer is responsible for determining Metenova's product will perform suitable in the intended application.



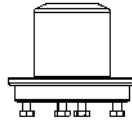
Mix Head



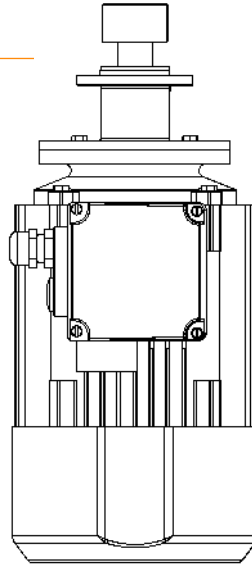
Male Post



Tank Plate



Drive Unit



General guide for components detail specification data sheet  
(More variation options available for each subcomponent)

Mix Head	Male Post	Tank Plate	Drive Unit
DS-031 HP Mix Head	DS-045 ZG Male Post	DS-032 HP Tank Plate Welded	DS-025 HP Drive Unit
Net Weight (approximate)			
Mixer Model	HP2	HP5	HP8
Weight kg (lb)	10 (22)	27 (60)	58 (128)

Additional information	
Operating Temp	5°C - 150°C (41°F - 302°F) Environment Temp 0°C - 40°C (32°F - 104°F)
Operating Pressure	-1 - 7 barg (-14.7 - 103 psig)
Surface Roughness	Ra ≤ 0.38 µm (15 µin)
Surface Treatment	Electro polished. Non animal origin polishing compounds are used.
Product contact material	Standard SS material 316L, bearing material SIC and elastomers EPDM (USP VI , FDA compliant). Other material options available upon request.