



Products – Manufacturer

**Precision and
perfection.**



Innovative Automation.



An essential pillar of the more than 26 successful business years of Seli, is the domain development & production.

With the manufacture of products from such areas as temperature, pressure, level measurement, analytics, evaluation and accessory parts we have been setting trends for years in the development of innovative technology especially in the food industry – of course "Made in Germany".

Companies such as Coca-Cola and Dr. Oetker, or the well-known Warsteiner brewery, the König brewery or the AB InBev group trust our expertise just as much as the Deutsche Milchkontor (DMK) and numerous other large enterprises of the beverage food industry.

On one hand we take great pride in this. On the other hand, though, it also encourages us to permanently expand our innovative potential.

It is not mass production that has made our company so successful but the sector-specific and solution-oriented development and production that provides our customers with a maximum of precision and reliability in order to optimize manufacturing processes and guarantee the greatest possible economic efficiency.

Our corporate philosophy is characterized by an integrated approach. Thus, we are also assembly-, service- and training partners for our customers and much more.

Why not make your tasks our challenges?

We will be pleased to help you!

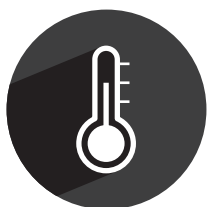
Top quality establishes trust.

The quality requirements of consumers are constantly on the rise. Against this background the demands of the food industry in regard to hygienic production processes are immense.

Seli products are developed in accordance with IFS food guidelines and the requirements regarding hygienic designs. Explicitly manufactured in Germany – in cooperation with specifically selected and experienced development and production partners – they fulfil all requirements regarding first-rate quality and food safety as well as high availability.

In addition, the modular process interfacing technology guarantees ultra-modern hygienic plant integration.

With Seli you can count on optimal safety and thereby support sustainable confidence building for your products.



Temperature



Pressure



Levels



Analytics



Evaluation



Accessory parts



QUILINOX®
ALL ABOUT FLUIDS



902 304 316

quilinox@quilinox.com

www.quilinox.com



Temperature



Our process adapted temperature measuring technology with its modular integrated design creates not only utmost product safety but also represents a maximum of individuality in its application.

Advantages

- Significant reduction of storage costs
- Cost reductions for maintenance and calibration
- Trouble-free maintenance through technical staff due to precise adjustment of components
- Quick and easy exchange of potential malfunctions
- Documentable
- Straightforward operation (easy to use)


TF 13

- Temperature sensor Pt100
- Insertion option 6mm
- For movable process connections


TF 14

- Temperature sensor Pt100
- Spherical weld-in sleeve
- For closed processes in hygienic design


TF 35

- Temperature sensor Pt100 with modular hygienic process connection (Hygienic Connect)
- For all standardized process integrations within the hygienic design
- Transducer option
- Configurable, documentable


TF 43

- Temperature sensor Pt100 (stick version)
- Insertion option 6mm
- For movable process connections
- Hygienic design
- Transducer option
- Configurable, documentable


TF 45

- Temperature sensor Pt100
- Modular hygienic process connection (Hygienic Connect), stick version
- For all standardized process integrations, hygienic design
- Transducer option
- Configurable, documentable


TF 47

- Temperature sensor Pt100
- Weld-in sleeve system
- For fast maintenance and calibration
- Hygienic design
- Transducer option
- Configurable, documentable



Pressure



Our pressure transducers for hygienic applications are equipped with modular process connection technology and are typically configurable with the device or the computer.

Outstanding advantages

- High precision
- In accordance with all hygienic production process requirements
- High impermeability
- Documentable
- Straightforward operation (easy to use)


SDT 02

- Process pressure transducer
- Modular hygienic process connection (Hygienic Connect)
- For easy process applications
- Hygienic design
- Configurable, documentable


SDT 12

- Process pressure transducer
- Modular hygienic process connection (Hygienic Connect)
- High precision
- Hygienic design
- Configurable, documentable


SDT 03

- High precision process pressure transducer
- With modular hygienic process connection (Hygienic Connect)
- For all process applications
- Hygienic design
- Configurable, documentable
- Easy to use


SDT03-H

- High precision process pressure transducer
- Modular hygienic process connection (Hygienic Connect)
- For media temperatures up to 180°C
- Configurable, documentable
- Straightforward operation (easy to use)


SDT 05

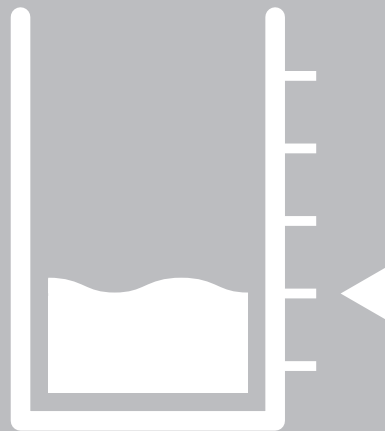
- Process pressure transducer
- Modular hygienic process connection (Hygienic Connect)
- Ceramic membrane for aggressive media
- Two switch outlets
- Hygienic design


SDT 09

- Immersion probe to record levels in wells or open containers
- Very robust finish
- Small diameter (27 mm) with suspension device



Levels



Extremely high measurement dynamics and a hygienic product design which integrates well into the plant are features of our level technology.

Further parameters to guarantee supreme quality

- Long lifetime due to robust finish for food industry applications
- All parts in contact with media are made from polyether ether ketone (Peek) or stainless steel
- Microprocessor controlled technology
- Documentable
- Straightforward operation (easy to use)



SMW

- Level limit switch for all liquid foods
- Modular hygienic process connection (Hygienic Connect)
- For all standardized process integrations, hygienic design
- Configurable, documentable



SGS 02

- Level limit switch for all liquid foods
- Stick version with modular process connection (Hygienic Connect)
- For all standardized process integrations, hygienic design
- Configurable, documentable



KS 15

- Conductive level probe
- For limit level detection in conductive liquids
- Modular process connection (Hygienic Connect)
- Integrated electronic evaluation as an option
- Configurable, documentable
- Straightforward operation (easy to use)



KS 17

- Conductive level probe
- For limit level detection in conductive liquids
- GEA process connection
- Integrated electronic evaluation as an option
- Configurable, documentable
- Straightforward operation (easy to use)



KS 35

- Conductive multi-rod level probe
- For limit level detection in conductive liquids
- Modular process connection (Hygienic Connect)
- Integrated electronic evaluation as an option
- Configurable, documentable
- Straightforward operation (easy to use)



SFP

- Level probe for continuous measuring of liquid, media independent, rod can be shortened
- Modular process connection (Hygienic Connect)
- For all standardized process integrations, hygienic design
- Straightforward operation (easy to use)



Analytics



As with our entire product portfolio we are able to react in a precise and targeted manner to individual customer requests with our intelligent analytical technology.

Distinction from conventional article assortments

- Processing of exclusively high-quality materials
- Extremely high precision
- Compliance with all requirements of hygienic production processes
- High impermeability
- Documentable
- Straightforward operation (easy to use)



SLK

- Conductivity value sensor for simple product monitoring and phase separation in the food industry
- Adjustable switch outlet or analogue outlet
- Modular process connection (Hygienic Connect)
- Configurable, documentable
- Straightforward operation (easy to use)



SLI 03

- Inductive conductivity measuring device for professional product monitoring
- High precision, fast, robust and compact design
- Modular process connection (Hygienic Connect)
- Configurable, documentable
- Straightforward operation (easy to use)



STS 01/03

- Turbidity sensor and measuring device for professional product monitoring
- High precision, fast, robust and compact design
- Modular process connection (Hygienic Connect)
- Configurable, documentable
- Straightforward operation (easy to use)



STS 02/04

- Turbidity sensor and measuring device for professional product monitoring
- High precision, fast and robust
- For integration in process fittings used in processes without cleaning intervals
- Configurable, documentable
- Straightforward operation (easy to use)



SAW 830

- Process fitting for manual and automated process integration or analytic measuring technology e.g.
 - Turbidity measurement technology
 - PH measurement technology
 - Redox measurement technology
- For standard sensors and measuring devices 12/225 mm

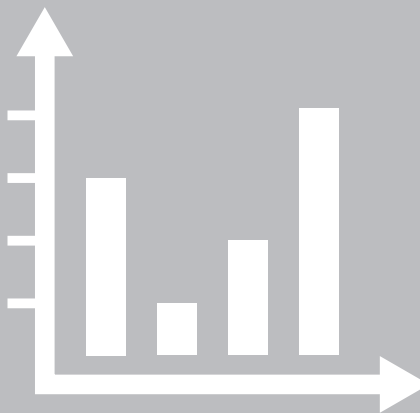


SOR / SRS 02

- Sensor to monitor cleaning of orbital and rotation cleaning systems
- Modular process connection (Hygienic Connect)
- Configurable, documentable
- Straightforward operation (easy to use)



Evaluation



Our innovative display and transducer systems are based on state-of-the-art technology and characterized by a future-orientated multi-functionality.

Customer benefits

- Cost optimization due to significantly reduced order and storage efforts
- Extremely high precision
- Documentable
- Straightforward operation (easy to use)



SNG-UC

- Processor controlled level switching device for conductive level probes
- Up to 4 probes and ground electrode
- Single level, level control, parameter switching
- Wide-range power supply (optional)
- PC configurable (optional) incl. process monitoring and documentation



SNKM

- Processor controlled level switching device for conductive level probes
- Reversible empty / full signal
- Can be integrated into one-rod level probe (e.g. KS 15/17)
- Direct connection with a SPS module
- PC configurable (optional) incl. process monitoring and documentation



SNR 01

- Level relay for conductive level probes
- 11.25 mm slim
- Adjustable sensitivity for outlet relay
- 1 channel



STR 01

- Transducer to change a standard signal into another standard signal and for galvanic isolation
- 11.25 mm slim



SMU

- Universal transducer
- For all standard signals
- Universal power supply
- One for all
- Simple integrated handling and manual
- Multilingual



MUK

- Head transducer for temperature probe Pt100
- For integration into all temperature probes with terminal head
- Configurable, documentable
- Straightforward operation (easy to use)

Accessory parts



Our extensive range of accessory parts is based on a modular concept which covers all standard process connection versions as well as custom tailored solutions. The appropriate hygienic design electric connection technology complements the range.

Special benefits

- Multiple process connections are possible
- Solution-oriented application according to customer requirements
- Individual solutions for optimum process adaptation
- Documentable
- Straightforward operation (easy to use)


BP 15

- Weld-in sleeve G 1/2"
- For all sensors and measuring devices with modular process connection (Hygienic Connect) G 1/2"


BP 35

- Weld-in pipe G 1"
- For all sensors and measuring devices with modular process connection (Hygienic Connect) G 1"


HP 35

- Process adapter VARIVENT G 1"
- For all sensors and measuring devices with modular process connection (Hygienic Connect) G 1"


Dairy coupling DN50 or GP 35

- Process adapter dairy coupling DN50 G 1"
- For all sensors and measuring devices with modular process connection (Hygienic Connect) G 1"


ESR 15

- Weld-in pipe G 1/2"
- For all sensors and measuring devices with modular process connection (Hygienic Connect) G 1/2"
- For direct integration in pipelines
- Variable pipe diameters


FB-WAKH 4.5P3-2 S3930

- Device power supply cord in Hygienic design
- Resistant against all commonly used acidic or alkaline cleaning solutions and disinfecting agents
- High protection class IP 69 K

REPRESENTATIVES AND SALES PARTNERS

We are right
where you need us.



902 304 316

quilinox@quilinox.com

www.quilinox.com

